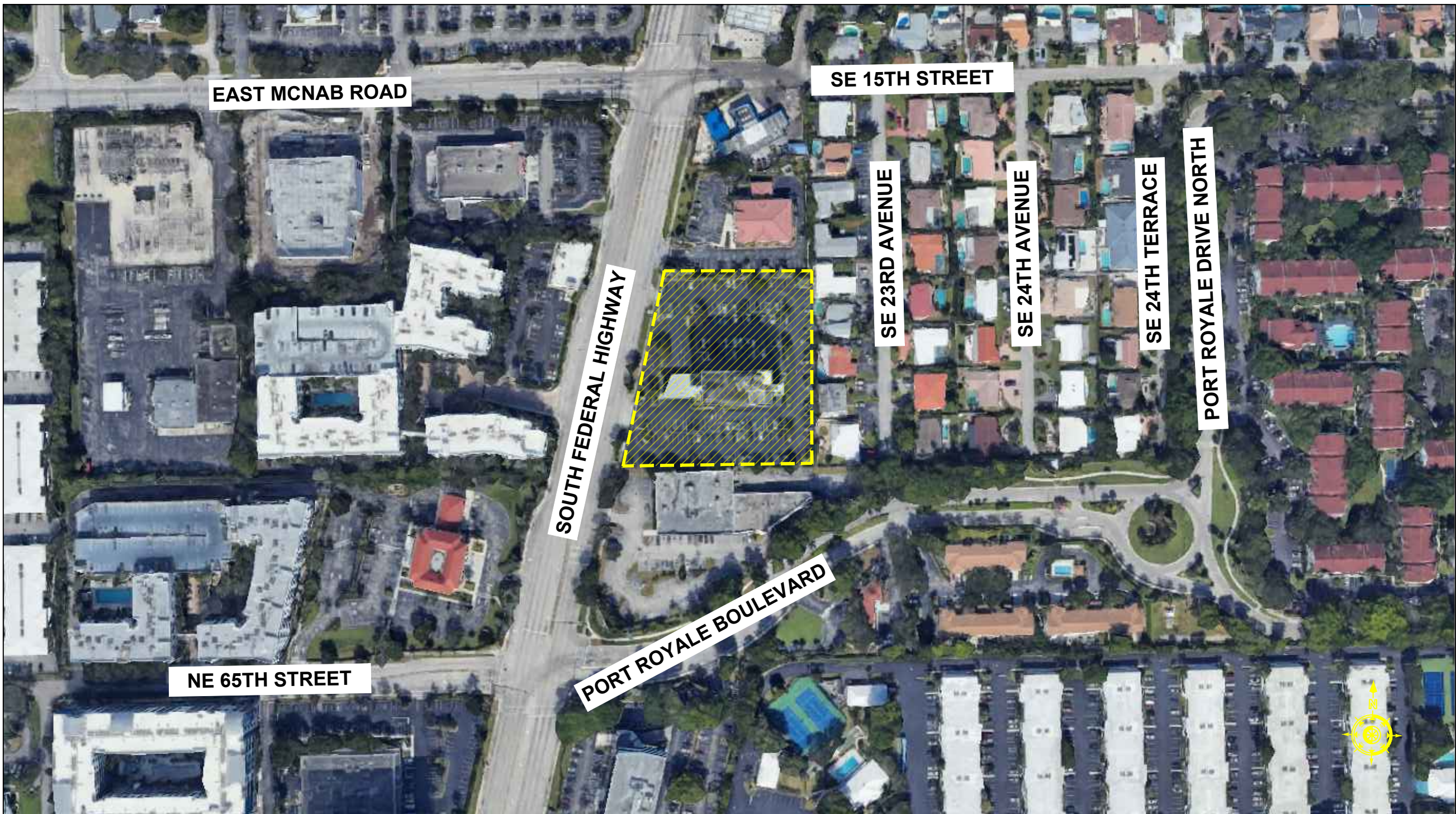
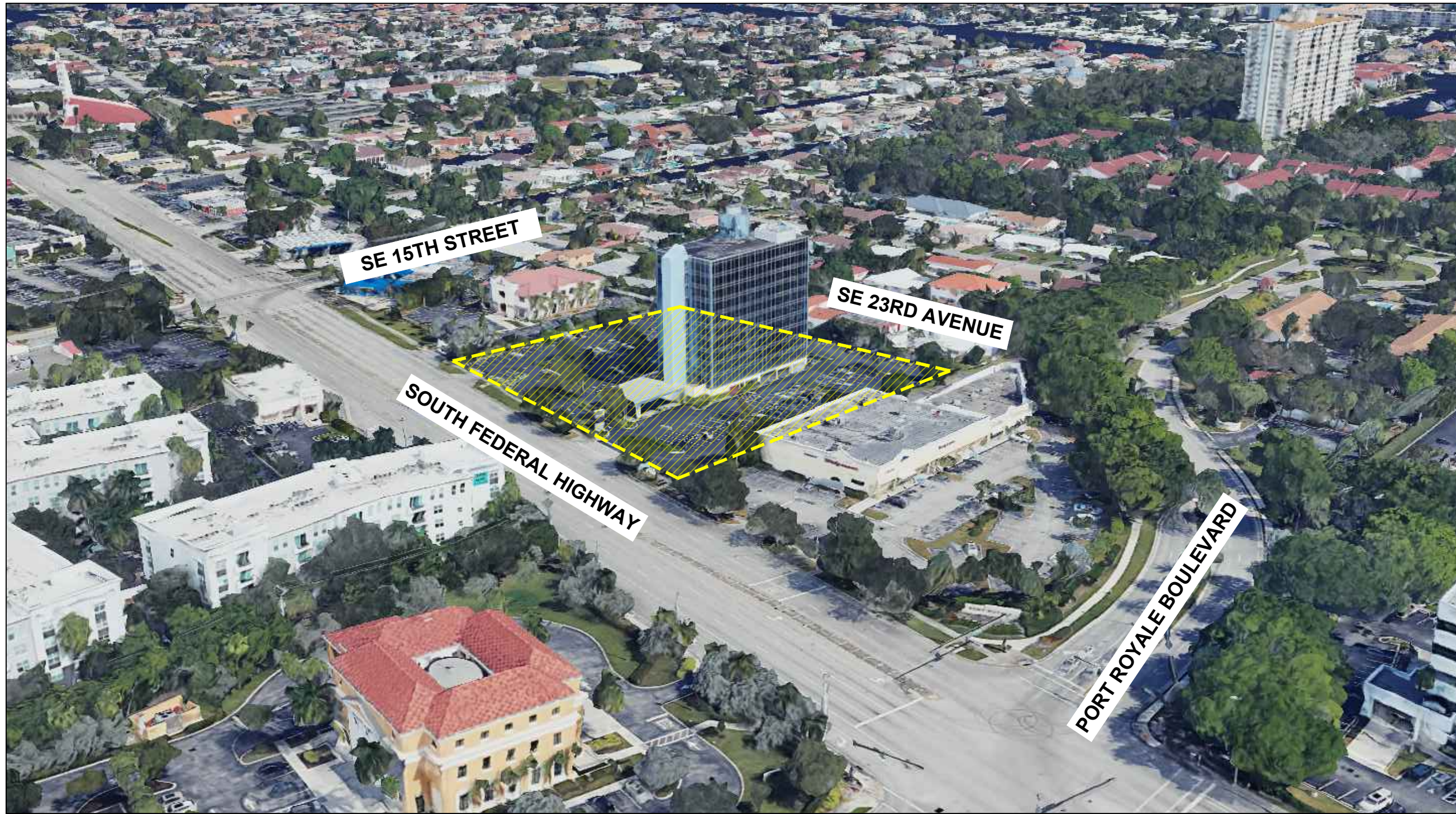


LOCATION MAP - 1 (1600 SOUTH FEDERAL HIGHWAY, POMPANO BEACH, FLORIDA 33062)



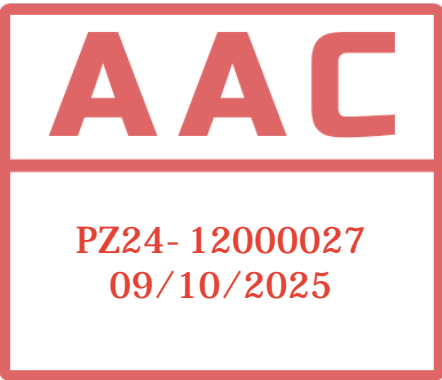
LOCATION MAP - 2 (1600 SOUTH FEDERAL HIGHWAY, POMPANO BEACH, FLORIDA 33062)



3D AERIAL VIEW - 1 (LOOKING NORTH - EAST)

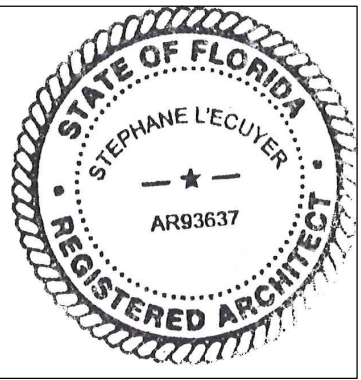


3D AERIAL VIEW - 2 (LOOKING NORTH - WEST)

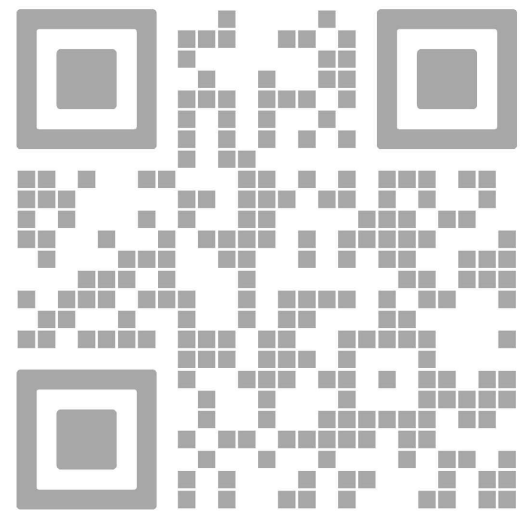


absolute-idea.com
CANAL PARK
3523 NE 163rd Street, Suite 200 North Miami Beach, FL 33160
T 305.792.0015 F 305.931.0279 @info@absolute-idea.com

SEAL
TO THE BEST OF MY
KNOWLEDGE, THE PLANS
AND SPECIFICATIONS
COMPLY WITH THE
APPLICABLE MINIMUM
BUILDING CODES AND THE
APPLICABLE FIRE-SAFETY
STANDARDS AS DETERMINED
BY THE LOCAL AUTHORITY IN
ACCORDANCE WITH THIS
SECTION AND 633 FLORIDA
STATUTES.
STEPHANE L'ECUYER
AR 93637



ISSUE FOR:
DRC SUBMITTAL



REV.	DATE	DESCRIPTION
01	05-13-2025	D.R.C. SUBMITTAL

ALL MEASUREMENTS MUST BE VERIFIED BEFORE
BEGINNING THE WORKS. NO MEASUREMENTS ARE TO
BE SCALED DIRECTLY FROM THIS DRAWING.

Key section

Client
VERA FUND
NICK POLYUSHKIN
& YURI KHARITONENKOV
TEL: 305.833.3303

Project
**1600 S FEDERAL HIGHWAY
(MIXED-USE PROJECT)**
1600 SOUTH FEDERAL HIGHWAY,
POMPANO BEACH, FL 33062

Title
SITE LOCATION

Drawn J. WU	Field ARCHITECTURE
Verified N. TREMBLAY	Scale as shown
Approved S. L'ECUYER	Date 08-15-2025

Project Manager J. WU	Dwg. no. A-003
Project 24-838	